



OWNER'S MANUAL

LIGHTS & WARMERS

TABLE OF CONTENTS

Contents	2	Heating Elements	5
Important Owner Information	2	Parts & Service.....	5
Receiving and Inspecting the Equipment..	3	Wiring Installations	6
Models.....	3	Wiring Diagrams	7
Cleaning Instructions.....	4	Sample Layouts.....	8
Identifying Your Product.....	4	Warranty.....	9
Changing the Bulb.....	4		

This manual is an important part of your equipment. Your owner's manual should be stored in a safe location, as it will be useful for the life of your product. It contains important safety information concerning the maintenance, operation, and servicing of these products.

Failure to properly follow this manual may result in serious injury. Do not operate this equipment unless you have read and understood the manual contents.

IMPORTANT OWNER INFORMATION

Record your guards' model number(s) and warming unit serial number(s) (if applicable) to use as a reference when contacting your local representative or BSI headquarters.

Model No.:	
Serial No.:	
Model No.:	
Serial No.:	
Date of Purchase:	
Other:	

BSI Corporate Contact Information

Business Hours: 8:00 AM to 5:00 PM MST
Telephone: 800.662.9595
Fax: 303.331.8444
Web Address: www.bsidesigns.com

LIGHTS & WARMERS

Food shield systems can be built with lights, warmers, or a combination of the two. Proper maintenance for these products is very important for safety. The following pages will detail the proper methods of keeping your product clean, how and where to exchange parts, and includes diagrams for proper wiring.

RECEIVING AND INSPECTING THE EQUIPMENT

Care should be taken during unloading and uncrating to avoid equipment damage.

1. Visually inspect the package, skid, or container exterior. Any damage should be noted and reported to the delivering carrier immediately.
2. Open and inspect contents for broken glass and verify that all items were received.
3. In the event that damage is discovered, notify the carrier and request freight damage forms.
4. Request an inspection by the shipping company of the damaged equipment. This should be done within 10 days of equipment receipt.
5. Retain all crating materials until an inspection has been made or waived.



ALL LIGHTS, WARMERS AND COMBO UNITS ARE SHIPPED USING ZIP TIES TO SECURE UNITS DURING TRANSIT. AFTER INSTALLATION, CAREFULLY REMOVE ALL ZIP TIES.

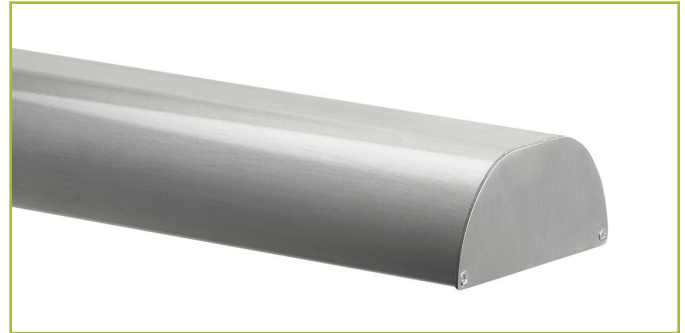


Lights and warmers must be installed in accordance with the applicable installation code by a person familiar with the product's construction, operation, and potential hazards involved.

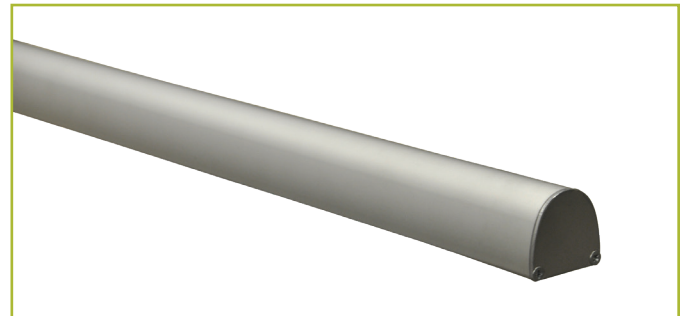
All light and warmer models are certified by NSF.



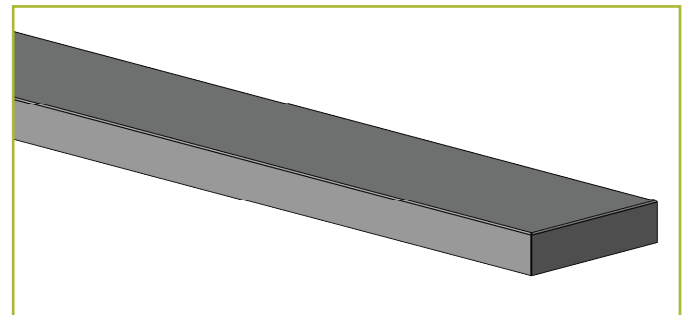
MODELS



Stealth Warmer & Light Combo Model 705
Stealth Warmer Model 790



Slimline Light Model 2580



Stealth Heat/Light/Heat Combo Model 500

CLEANING INSTRUCTIONS

Once your food guard has been properly installed and you have removed all zip ties, it will be important to keep your light, warmer, or combo unit clean to prolong the life of the product.

BSI recommends the following for keeping your product clean:

- Be sure to turn the power off before cleaning. Wait until Stealth warmer is cool. **Cleaning when the warmer is hot can cause staining or damage to food warmer finish.**
- Wipe the surface with a clean, damp cloth to remove fingerprints, dust, etc.
- Spray with a light coating of glass cleaner to remove grease or other dirt. Use a non-ammonia cleaner.
- Be sure not to spray any cleaning product directly into the bulbs, fixtures, or heating elements.

IDENTIFYING YOUR PRODUCT

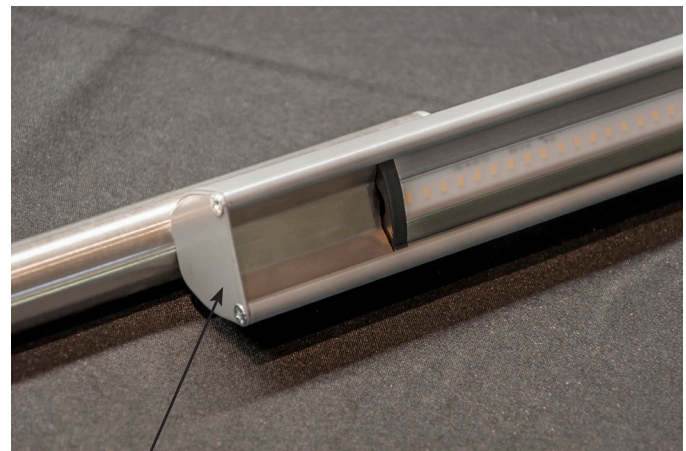
Each BSI light, warmer, or combo unit contains an identification sticker. This sticker provides the customer with the following information:

- Serial Number
- Model Number
- Manufacture Date
- Electrical Information



CHANGING THE LED BULB

- Turn off power to all lights and warmers.
- Carefully unscrew the end plate and slide out the entire LED light.
- If multiple lights are connected to each other, carefully disconnect serial connector or power connector.
- Once dead light bulb is removed, replace with new LED light. Carefully reconnect the connector and slide in the light bar.
- Replace end cover and two screws.



End Plate

LED LIGHTS

Part #	Description
16289	Kelly LED:_12" _LED_Light_Bar
16290	Kelly LED:_18" _LED_Light_Bar
16292	Kelly LED:_36" _LED_Light_Bar
16505	Kelly LED:_48" _LED_Light_Bar
16293	Kelly LED:_10' _Power_Cord_w/o_Plug
16294	Kelly LED:_Serial_Connector
16295	Kelly LED:_6" Power_Connector

HEATING ELEMENTS

Part #	Description
492-18-BK	Element:_18"_120V_Heater_350W
492-24-BK	Element:_24"_120V_Heater_500W
492-30-BK	Element:_30"_120V_Heater_660W
492-36-BK	Element:_36"_120V_Heater_800W
492-42-BK	Element:_42"_120V_Heater_950W
492-48-BK	Element:_48"_120V_Heater_1100W
492-54-BK	Element:_54"_120V_Heater_1250W
492-60-BK	Element:_60"_120V_Heater_1400W
492-66-BK	Element:_66"_120V_Heater_1560W

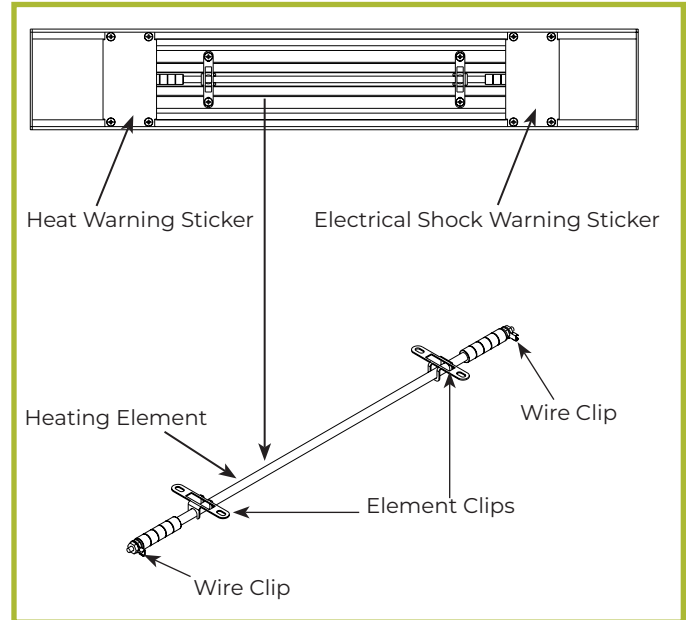
Part #	Description
496-24-BK	Element:_24"_208V_Heater_500W
496-30-BK	Element:_30"_208V_Heater_660W
496-36-BK	Element:_36"_208V_Heater_800W
496-42-BK	Element:_42"_208V_Heater_950W
496-48-BK	Element:_48"_208V_Heater_1100W
496-54-BK	Element:_54"_208V_Heater_1250W
496-60-BK	Element:_60"_208V_Heater_1400W
496-66-BK	Element:_66"_208V_Heater_1560W

240V Heat Elements are a special order item. Contact BSI at 1.800.662.9595 to order.

REPLACING THE TUBULAR HEATING ELEMENTS

On all three Stealth warmer units, the tubular heating element can burn out — similar to a light bulb.

Replacement should be done by a professional service technician. If you have additional questions, contact BSI at 1.800.662.9595.



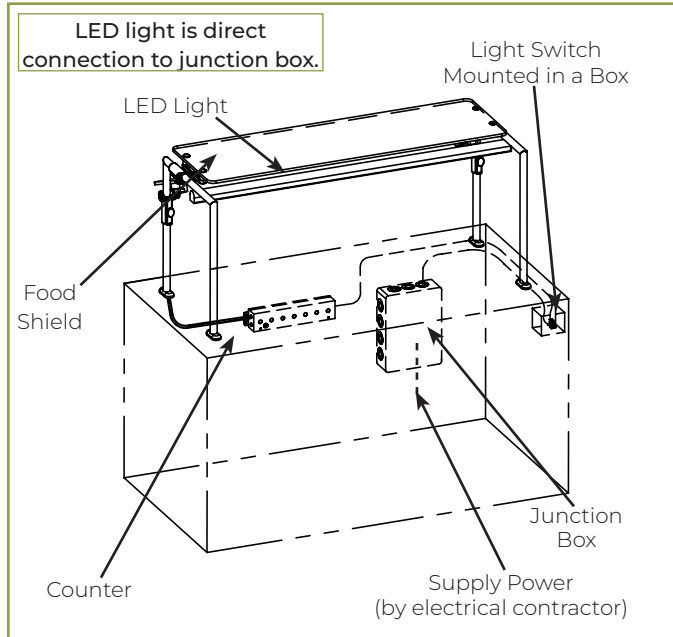
PARTS & SERVICE

In the event your lights or warmers require major repairs, contact your local installer for assistance.

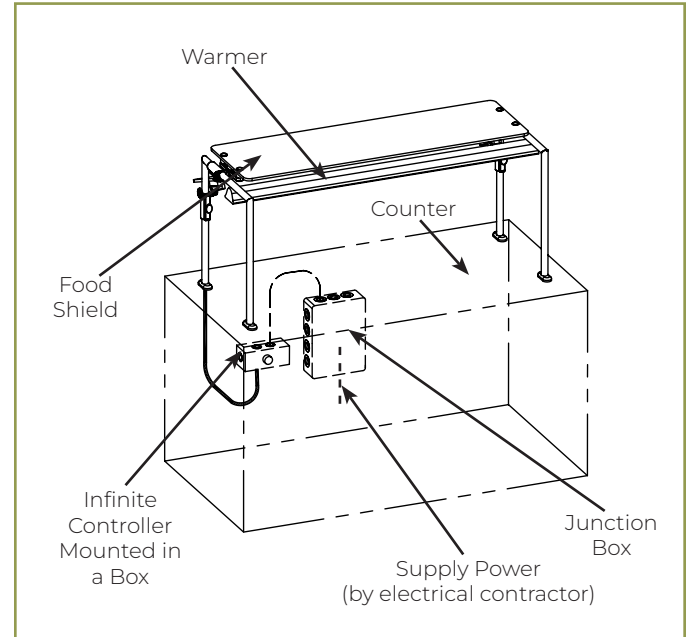
If you have product questions or need minor replacement parts, contact BSI at 1.800.662.9595.

WIRING INSTALLATIONS

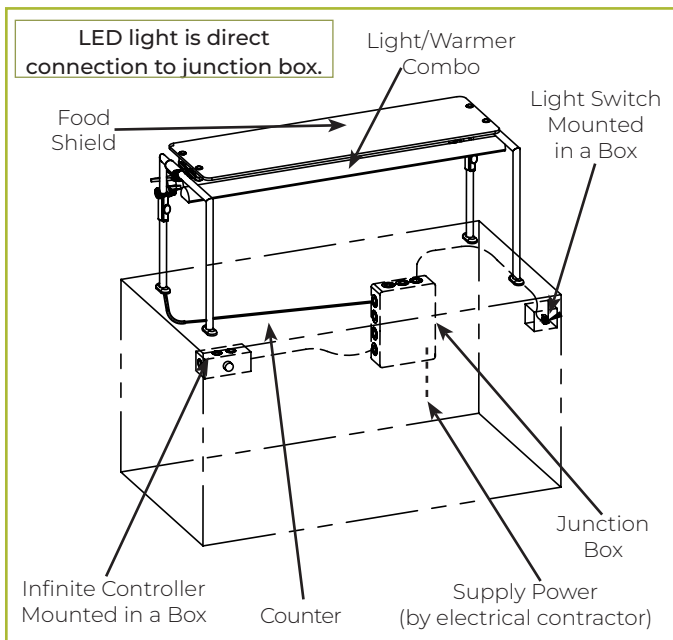
Slimline 2580 LED Light



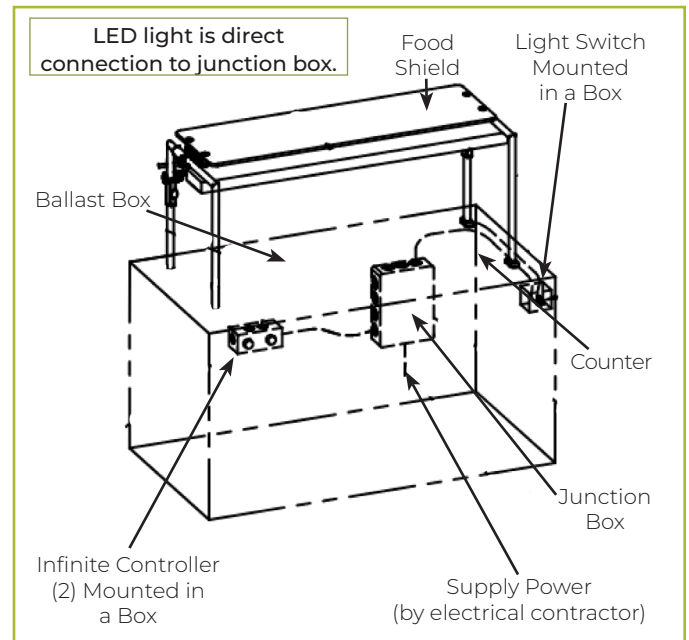
Stealth 790 Warmer



Stealth 705 LED Light & Warmer Combo



Stealth 500 LED Heat/Light/Heat Combo

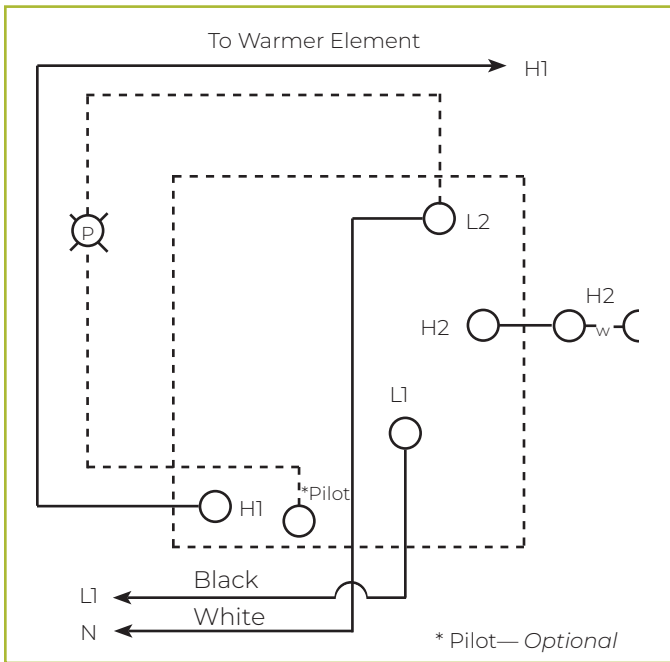


INSTALLATION INFORMATION

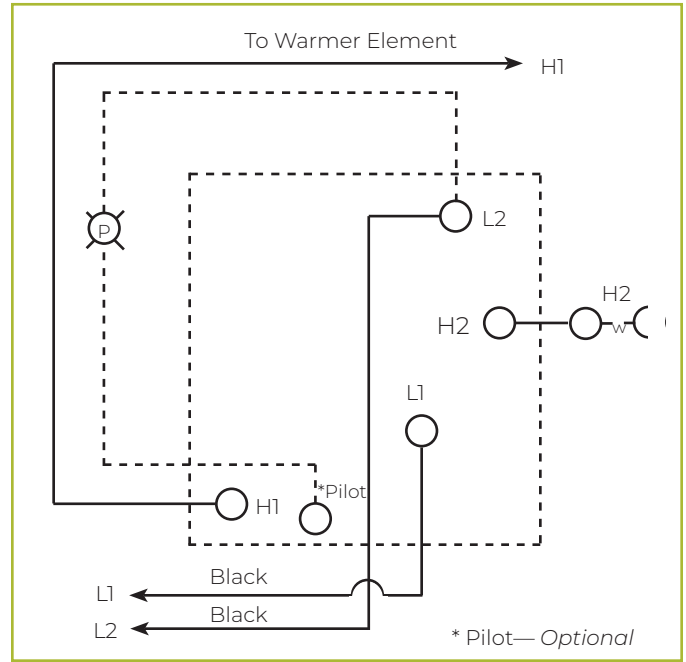
- All wiring should be performed by a certified technician.
- Wires are routed through wire chase/support legs per approved shop drawings.
- Mount the infinite controllers near the wire chase/support leg.
- The infinite controllers, light switch, and six feet of conduit/wiring exiting support legs are provided with all BSI lights & warmers.

WIRING DIAGRAMS

Remote Infinite Control for Stealth Warmer/Combo Units

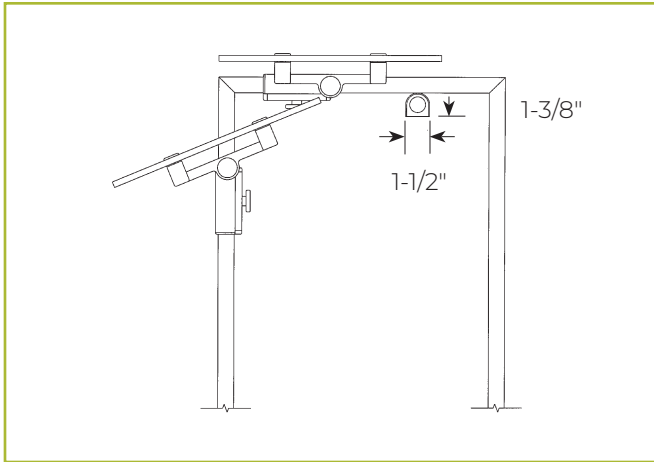


Infinite Switch (120V) - Part #581

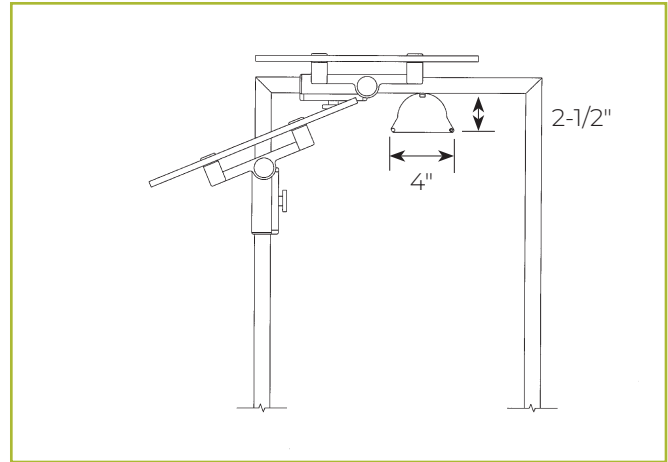


Infinite Switch (208V/240V) - Part #582

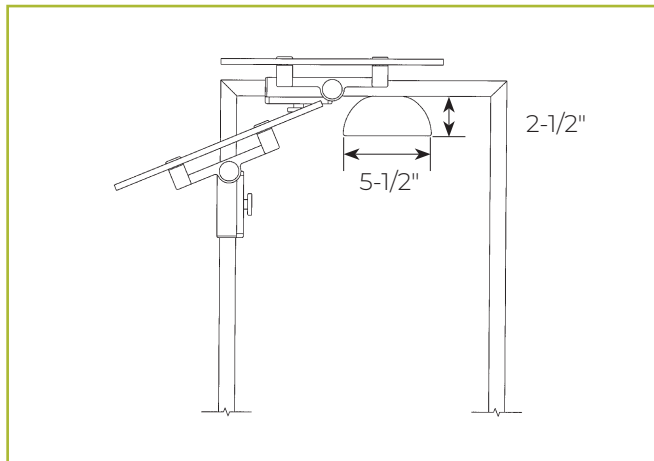
SAMPLE ZGUARD® LIGHT/WARMER LAYOUTS BASED ON A ZG9930 CONFIGURATION



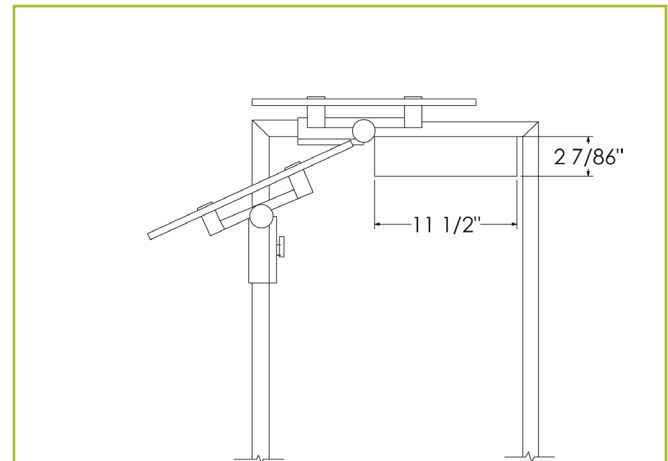
ZG9930 with Stealth 2580 Slimline Light



ZG9930 with Stealth 790 Warmer



ZG9930 with Stealth 705 Light/Warmer Combo



ZG9930 with Stealth 500 Heat/Light/Heat Combo

BSI, LLC WARRANTY

BSI, LLC warrants its products to be free of material and workmanship defects under normal use from the date of original purchase and for the applicable warranty periods set forth below. BSI, LLC's warranty extends only to original purchasers acquiring new products purchased in the United States directly from BSI, LLC, its authorized dealers, or other companies specifically authorized by BSI, LLC to act as resellers of its products.

STEALTH WARMERS

BSI, LLC warrants the Stealth housing and warming element against material and workmanship defects for a period of two years from invoice date.

STEALTH LED LIGHT

The LED light warranty covers the ballast for material and workmanship for a period of two years from invoice date. The LED bulb itself is not covered under warranty.

THERE ARE NO WARRANTIES EXCEPT AS STATED ABOVE, WHETHER EXPRESSED OR IMPLIED, INCLUDING, BUT NOT LIMITED TO, ANY WARRANTY OF MERCHANTABILITY OR FITNESS FOR A PARTICULAR PURPOSE. Warranties do not apply to products that have been altered in any way or to products subjected to misuse, abuse, neglect, accident, or damage in transit. Warranty is void if products are used, held, or stored in an unsupervised environment. BSI, LLC's liability shall be limited to product repair or replacement, or refund of purchase price issued at the discretion of BSI, LLC. BSI, LLC will not be liable, under any circumstances, for incidental or consequential damages (including, without limitation, to lost profits) arising in connection with the sale, use, inability to use, repair, or replacement of BSI, LLC's products. The liability of BSI, LLC arising from any cause shall not exceed the price paid for the products.

Any breach claim of the foregoing warranties shall be deemed waived unless submitted to BSI, LLC in writing within 30 days of alleged defect discovery date or by reasonable inspection should have been discovered. Merchandise must be returned to the BSI, LLC factory, freight prepaid, and will not be accepted unless a prior Return Merchandise Authorization (RMA) has been issued by BSI, LLC. A copy of the original invoice must accompany the returned merchandise to verify the original purchase date and warranty entitlement. Any cause of action for breach of the foregoing warranties shall be deemed waived unless brought within one year of claim submission.